



Lani Calkin. Auckland, New Zealand  
ph. 027 291 0165  
email: [lani@omegacommunications.co.nz](mailto:lani@omegacommunications.co.nz)  
web site: <https://omegacommunications.co.nz>  
YouTube: <https://youtu.be/yiXabVjg4T8>  
FaceBook: @omegacommunications

Session: 1202  
Earth Date: November 30, 2023, Thursday  
NZ Time: 8.30 am

## Omega Communications Portal

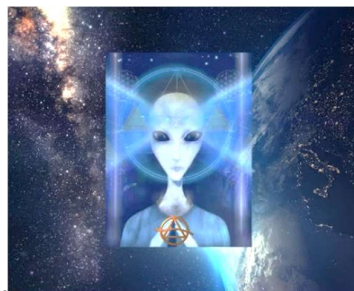
### Dimensional energy field corrections



Hello, Lani speaking to you again, linking us together in that beautiful consciousness field that we link in through. This exists, I want to say, all through our lifetime. We have only become aware of it in apparent recent

times, but for some of you it might be the last 50 years, or it might be the last couple of months. Our measurement of time doesn't matter. What matters is that you recognize there is this field of energy and information available to you.

As we now link into the field more strongly, you recognize you are linking in through your higher field senses. So this is the opportunity again to gather with many of us in that dimensional frequency space labelled the Station of Light. It is very simple to enter into it, with your intention, just as simple as taking in a conscious breath and letting it out and here we are – gathered in the receiving aspect of the Station of Light.



“Thus we begin. Orem addressing you as you come forward here. I acknowledge you individually and I acknowledge you as the gathered community within the linkages established in the consciousness field.

You will have realized that this is presenting to you nothing that is troublesome you may think in the world around you. It is presenting no predictions. It is simply presenting you into the field where you completely attune to the cosmic intelligent field, which is the natural consciousness state of you. We are helping you to remember this.

Thus you are able to make changes in accordance with the creative life field, the consciousness, the concepts and all of this is contained in what you brought forward within the life body form as the soul consciousness – the one consciousness.

So, bringing your attention into this again, perhaps you are feeling the expansion, perhaps you are feeling you have opened and allowed some level of concern or stress, anxiety in any way - those appear to be the natural emotions which come up in your daily activities. Again, they are only apparent circumstances that appear and they appear so that you recognize they are only an appearance but when you focus and connect again to the conscious intelligent field of your soul presence, those situations simply resolve and dissolve. This is how you move through processing elements of your life cycle.

As we view you here, we are able to identify your individual energy field. We speak about this currently because we observe that many of the energy fields around you are not vibrating correctly in harmony with the elements of the pure creation system. This exists naturally throughout all life. As you realise this now, you may feel there are adjustments occurring in the energy field around you, both in your presence here as we are communicating with you, but also we are communicating with you in your physicality presence. There is the same adjustment occurring in the energy field. Some of it has been not the same strength and dimensional clearance around you and when this occurs, this is when weaknesses appear and you become sensitive to other conditions and the outcome of that is disorder, or discomfort in some level that you register in the multi dimensional fields of your energy field.

We are assisting you in this way to correct this energy field, the outer edge of your consciousness field. At the edge of your consciousness field there can be an accumulation of impositions from the environment around you. So, as you recognize that in your capacity of being connected always to the prime source of creation, you are able to clear your energy field. Remember you must do it from your internal soul connection – the central core channel of you.

In your terms you may reference this as healing. In our terms we are simply restoring the bio-energetic field into its correct dimensional positioning and the spatial presence of you. Do you realise we are indicating this is your multi-dimensional presence existing in multi dimensions. This is why it is important to clear your energy field from your density, that is your biological systems present on Earth – it is important to clear it from that level and then this is clearing you in the multi-dimensional field.

At this point we remind you that your multi-dimensional field is similar to a vast galactic situation. This is what you encompass as a conscious intelligent being.

**Already, you are balancing and harmonizing all the layers of your own energy field.** This is the way the restoration happens that we referred to in our previous gathering together. There is continuation and all this is contained in the energy transmissions that you receive as you enter into this Station, reconnecting in whatever timeframe that you would select. You bring the pure point of your consciousness that you have reached and remembered – you bring that into every spatial coordinate where you exist and receive energy information from the cosmic intelligent field.

This is what you are surrounded in and this is what you are revealing into the space around you, into that dimension around you that you see physically, that you touch, that you mix with other people who may be unaware of the importance of the energy field being clear.

This is the essence of the presentation to you in this session. This gathering in this coordinated dimension out of Earth spatial coordinates is important because you are able to receive it in the inter-dimensional field that is identified as the individual as you. You are brought into receiving this so that you activate it fully, that you integrate it fully throughout all the levels of your consciousness. Thus it is.

This is the prime focus for you as you continue absorbing this, realizing it in every way.

*Orem out “*



Thank you, Orem. Lani speaking again and I am still experiencing being immersed in that multi-dimensional space that he took us into being aware that it exists around us and within us.

This will carry us forward into greater expansion I am sure in this life cycle. Enjoy this, just as I enjoy bringing these energy sessions through for you all.

This gathering is complete today and it is time now for you to take in that lovely natural breath, being conscious that you are breathing in and breathing out and bringing all of this down fully into all the layers of your consciousness field and deeply into the core central channel of you and deeply into every cell of your body and all around your energy field.

Take a moment to feel your energy field and if it doesn't feel clear and wide around you, then simply bring in the energy to clear it and balance it, just as Orem was balancing and re-aligning our energy fields.

Our energy fields can become weakened or not aligned properly and this also happens when we are not fully consciously connected into earth time. That changes our energy field, that changes our attention, so it is important to be attentive in the current world but at the same time, drawing in the cosmic intelligent field right down into you. This is your soul, your consciousness fully present.

Now as you open your eyes and bring yourself fully back into Earth, be aware of the current time and enjoy the time around you. Thank you, this ends this session through the Omega Communications Portal.

Lani ❤️



---

**Next Gathering:** December 7, 2023

---