



Lani Calkin. Auckland, New Zealand
ph. 027 291 0165
email: lani@omegacommunications.co.nz
web site: <https://omegacommunications.co.nz>
YouTube: <https://youtu.be/hKu412nC2Y>
FaceBook: @omegacommunications

Session: 1193
Earth Date: September 28, 2023, Thursday
NZ Time: 8.30 am

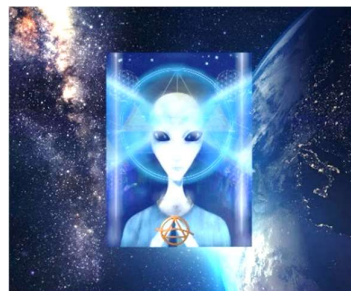
Omega Communications Portal

Junction points, energy nodes of cosmic matrix



Hello, Lani with you again presenting this opportunity to you to gather with all of us as a collective group around this planet in the many places where you are receiving this. We begin as usual by you allowing yourself to relax and as you breathe naturally and easily in and out, allow yourself to be with us gathered in the receiving area of the Station of Light.

This is where we are greeted by the galactic command beings, inter-galactic, multi-galactic beings who use this Station of Light to communicate with us and to observe us. Already, you are here within the energy field of these beings who perhaps are like the counterparts of you. Just be here, willing to receive. Thank you.



"Greetings to you all. Orem addressing you on behalf of the collective beings here and so we continue this area of you, of welcoming you, of viewing your energy field, of bringing you into this state of harmonic resonance with the receiving field that this station is, and it is receiving the frequency patterns that are higher than what is normally received in your day-to-day existences around the planet. It acts as a transforming space. It also acts as an informing space for you. Therefore, each time you come into these gatherings, you will be informed with the energy field that is currently being infused into this area and you easily adapt to it, receiving it in all the ways that your higher cosmic self knows and understands how to utilize and receive the energy.

The effect of this can be profound when you realize it is moving through your entire lifespan. This is incorporating your lifespan as what you refer to as future. So as well as receiving it in this presentation of you presently here, it moves dimensionally all throughout your lifespan, all throughout your energy field which indeed is your lifespan.

You would understand from this that you have been experiencing, often simultaneously but often sequentially, experiences and events. You may view earlier experiences and events in your life cycle and as you review them, they feel they are in the present with you. Even though you are receiving and incorporating the lifecycle as it extends to your view that you have not yet experienced it, it is around you.

It is formed by you receiving the **information patterns from cosmic field** and as you interpret it and follow the impulses and activations coming in through that field, this is how you move into the **extension of your lifecycle**, and you feel it. You may already feel an anticipation of your sensing of the extraordinary feeling of your life cycle as it exists and pre-exists in those stations of light – the cities of light – established through the cosmic field.

There was in a sense the wholistic presentation of you and the wholistic field for the healthy lifeform for your lifecycle already presented as one unit. The singular unit that you are is reviewed every time you bring yourself into the cosmic flows. As we said, in this station it is being interpreted in a way that your high self, your soul aspect, will receive it and also it is receiving what we have referred to as the upgrades. It is the continuous flow to ensure that the lifecycle is expanded in the way of the original purpose for you as the soul being present within the lifeform.

We view it as a simplistic presentation of the soul within your lifecycle. It is your levels of self conscious state that will want to analyze it, want to describe it, want to perhaps change the creation. If you are working in that level, you must first reconnect to the original purpose for your lifespan and the pure aspect of the creation for the lifeform. That is the simplicity of it and this is why we direct you to continuously, daily, reconnect to the original core aspect for you – **the cosmic self**.

You will be feeling this and we observe that you are acknowledging this and this creates a stronger field that you are within and receiving with us, participating in the original and pure mission for us all – establishing this beautiful planetoid as its expanding field of light, expanded consciousness, receiving the original intention of source energy, the cosmic presence.

We pause for a moment so that you will be experiencing the vital essence of this presentation to you in the energy field that surrounds you and is always there in support.

Within the energy field of support, the cosmic matrix field, you may already have realized there are **junction points**, there are the **energy nodes** within each vector of the overall energy field matrix.

Many times as you move more fully into the complexity of this energy matrix field, you are drawn into **connecting nodes**. These are placed within the energy fields, so it is not like you need to travel to experience certain areas around different land masses, although they do exist in such states.

You are able to access the individual **conjunction points** that will assist you at any moment when you experience a sense of loss of connection. There is an automatic reconnection to many of these juncture points – the nodes – to again establish you within the connected consciousness field of the cosmic matrix. We say again, this is an automatic attraction between you and your sense of direction and sense of connection and it arises when you feel there is separation or disconnection from the individual junction portals that you feel are needed.

As we continue to observe you and the supporting team, we do help you to locate the **particular portals, the juncture points**. They are simply to reconnect you into the cosmic field. We expand this point for you for your understanding because you are receptive to it now. It is an expansion of what we have referred to previously as simply reconnecting to your point of origin and vital essence. You see how the consciousness field of you has expanded to allow this to come into your awareness? We are simply describing what is already there.

Now that you see this and experience it, it makes it stronger in your awareness and so many times you will be aware of being drawn out of the physical environment into the energy environment and you simply follow the pathway to the exact portal, or the presence of the junction, of these nodes that are particularly appropriate for you. You could then find you are meeting with intergalactic beings from the intergalactic command, which is simply a term for the collective consciousness available at times to you.

As you become filled with this, this is moving through your entire energy field and this is how you present it around you into the environment. Following this you feel more beauty being revealed, more joyful experiences being revealed and you see the beings you come in contact with who are aware of this and they respond to what is emanating out through your energy field. This has occurred naturally throughout all the stories presented to you through history where there have been the ones who have a lighter energy field that people feel when they come in contact with it. It is a natural revealing and natural state of you as you come forward in your lifecycle, outworking your mission.

There is always expansion that we bring you into and thus this aspect of the presentation to you is complete at this time in this gathering. You will be absorbing this all. We acknowledge this.

Orem out “



Lani speaking to you again as I come forward and I am aware of this beautiful information that has been presented to us.

Now it is for you and myself to bring it all back into the locality, into our lifecycle. Yes, I am speaking directly to you individually and also to all of us who are receiving this at whatever time space reality in which you enter this particular information presentation. It is freely available to you.

Now you will be moving out of the station of light and you will be bringing all this back throughout your timeline and throughout your energy field and anchoring it deeply within your physicality, into this lifeform present in the present moment as we experience moments in time on the Earth planet. This is what you came in to receive in this gathering. Thank you for being here.

Take in a natural breath and as you let it out, feel this is filling you right deeply in you and around you and all through your lifecycle, all of it present in this moment as was explained to us.

This ends this session through Omega Communications Portal. Every time you feel to share these sessions, you are sharing the vital essence you have received with all the ones that you share the session with. It is part of that **cosmic intelligent matrix** and we are just using this form of technology and even enhancing the technology with the cosmic intelligent field. Thank you.

Lani  

Next Gathering: October 4, 2023
