

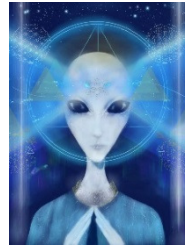


Lani Calkin - 24A Albrecht Ave, Hillsborough
Auckland 1041, New Zealand
ph. 027 291 0165

email: lani@omegacommunications.co.nz

web sites: <http://www.omegacommunications.co.nz>
<http://www.pemfauckland.com>

search **youtube.com** for **omega communications**
<https://www.facebook.com/omegacommunications>
<https://www.facebook.com/pemfauckland>



“We greet you in this moment in this space, Beloved. Orem addressing you and I have come to assess you, to observe you. We observe you and in the process we establish a strong connection with you. Your energy field, your consciousness, becomes aware of that observation, so in your daily activities there will be times when you become aware that you are being observed, or we are observing through you, simply because your consciousness has aligned with the higher aspect of yourself which is stationed in a very different aspect than your casual living situation currently and of course the higher self aspect arrives at the point of connection in the consciousness field and it is the multiple layers of those dimensions which connect us all and you are aware of that in some aspect of your consciousness.

So, we delve very deeply into you as we observe you in your light body energy aspect here. Is this how you identify yourself already in this space? This is a continuation of the exposure which you came into in the previous transmission and re-immersing you into that state where you realised that you are a being of light more than a being of dense physical aspect, this establishes the higher receptivity field which is your consciousness state. To be conscious that you are that energy Being allows you to give more energy into self, into the physicality, into the environment, into everything that is around you simply because you draw into you the exact frequency pattern that you resonate with in those layers of consciousness of your energy self.

This is the way that you bring into current manifestation the Star Bases and the activities present in those Star Bases. They also relate to the Cities of Light. The Cities of Light become the true way of living for you as you experience your time as a humanoid on Earth at this current state of existence. The Star Bases are connected with that. The Star Bases have a different energy field again, allowing Beings from other dimensions to come into the Star Base within the energy system of Earth.

For many aspects of those the time is not appropriate for them to fully materialise, to be fully seen in the light spectrum of the human being as it is currently. As you evolve more into the greater consciousness that you are, these different Star Bases and Crystalline Light Cities become more apparent.

We have led you into those spaces of the Crystalline Light Cities so that you become accustomed to the sensory perceptions, the vibrations, you receive when you are in those conditions and dimensions.

In all of this already presented to you in these few moments of verbalising to you what is around you, you have shifted. You have expanded even as your light form here and already the physicality is resonating with that.

Moving deeper within the Station here, we again bring you into the meeting chamber where there is the greater Council of Light who oversee you, who oversee the group functions that you participate in, in the overall purpose of you being on Earth as it is currently. Remember, that you allow the higher pattern, the frequency, to come through you.

There may be times now as you move forward where you will be more consciously aware of the observation taking place through you. In this way you are already working to observe what is occurring in the civilisation and that is brought back to be assessed and analysed through you in that moment. There have been other experiences where you have been present in a different life energy form observing and taking that information back through a transportation system into the various greater stations, such as this that you are in with us. We are pointing out to you that way is not necessarily the only way of bringing data and information back to be analysed, assessed and transformed and then returned back through you into different time dimensions.

You are consciously active working in those patterns we refer to as the time slips where you feel you would be encompassed in a sphere of

Issue 964
Date: April 25, 2019
Time 10.30 am

Omega Communications Portal Transmissions

We gather again today. Is this a special day for you? Is it a special day for you to align yourself with your higher self, your core essence and your mission for being on Earth? This could be just the moment that you have great clarity about it all. The potential is there for you to step into, as you acknowledge yourself.

So, come with me and we will gather in the receiving area of the Station of Light, and in that space they call the transition space, you are accessing everything that you need to know at this time. How simple is that!

So, I withdraw to allow the Beings helping you and me and everybody on Earth to come forward with what they wish to enfold us with at this time.

existence particular to you, an individual sphere, and it is through that you can travel through dimensions if it is appropriate. If it is appropriate for you to merge again with the energy objects of spheres which you located in different areas of the planet. In this session you are assessing those spheres to activate different components within them.

We have referred to the bio plasma energy, we have referred to the starfield energy, we have referred to the energy coming through the solar portal from central source. All of that is contained in these energy spheres you brought into Earth, alongside the energy that you presented into it yourself to help yourself in the present moment as you expand and move to the edge of your consciousness field in that expansion movement. The unfoldment into greater levels. Some of those perhaps you could identify as parallel existences. You are only drawn into the awareness of them for the purpose of releasing old data and experience and drawing about you the data and energy systems which you will be utilising in the shifting energy systems.

All of this is presented to you in this time slip field of accumulating data and of re-assessing the energy sphere you located and as you have reconnected with that, you bring that back through your individual transportation sphere, coming back into the area of assembly with the Council of Light and with other areas where there are gatherings of galactic beings all participating in this process assisting the evolution of consciousness, that is, of conscious beings, and also of the energy system that is the Earth Being. All of this is surrounded in the starfield matrix and you will perceive this around you in the assembly area with the Council of Light. It is all around you and there are particular aspects of that energy which again is being connected into the nodes existing around your particular energy field here and that will be continuing to unfold throughout your energy systems. It brings you into alignment with different aspects relating to your individual purpose on Earth.

At this moment as you are assembled here, you will realise you have released the experiences that you chose to balance out - perhaps relationships we would refer to them as - leaving you free to fulfil the ongoing part of your life now as an energy Being connected into the overall existence of Source Energy, the overall greater mission, and you have connected with that beyond the cycle of coming back into Earth and accumulation of data. You understand from this, we are telling you to realise you are clear to be totally aligned to that purpose of bringing light energy and information into you, into the planet, into the consciousness field. What is that light energy information, you may be asking. Are you sensing you are accessing dynamic areas of intelligent form, intelligent creation? This has motivational fields in it. This has the different aspects of creation to be manifested as part of existing in the dimensional existence of the Light Cities and all of that requires a certain amount of energy pattern, of frequency. Feel it. You are drawing this into you. There are many aspects of creation involved in this, and the simplest way at this present intersection and meeting is referring to the Starfield Matrix which draws in the energy of Source Creation through the solar portal.

You came into the Earth plane through the solar portal which is a level of consciousness and at that point you had all of the information needed to inform you in this natural body form you have taken on. Integrate this.

We bring you back now into the transition space where you began this particular journey again in the Station of Light. Feel the difference in the sense of your presence here. You may feel there are layers that have been overlaid over you that you are bringing back into your existence through moving through the time slip through different dimensions of reality and bringing back into you now everything that you need in accordance with the aspect of you experiencing and focused within the civilisation where you are, bringing in the light energy information of changing consciousness. This is you. We observe you as this.

I withdraw now from you

Orem out “



“This is Ulea with you momentarily and I am here again with my way of helping you integrate all of this, bringing it into you in the Earth time perspective where you are focused. I reach out to express my joy with you, you will feel that in your energy sensing and together with this vessel whom we address you through, we bring you back for you to integrate all of this back into your conscious form, through your conscious mind, through all those layers you recognise as you, your personality, your physicality in every way in our life. And that is done.

Ulea out “

I am Lani again present with you. I sense you are with me and we are sitting in a magnificent group perfectly in touch with the physical earth and I sense the expanded consciousness field around you. Bring this back into your sensing to where you are receiving this in this moment. That is all that is required of you to bring your attention back to the present moment where you are.

This has been expansive time for me as I experienced all of that as this different reality was presented and I value that, I acknowledge it, I acknowledge it in you.

I end this transmission now and I again acknowledge Ulea and Orem.

Thank you for again being here as I close this transmission today, with great love and light to you

Lani



Thanks to visionary artist Karen Elsworth for the painting of Orem and Ulea

<https://www.extradimensionalart.com>

Next Transmission : May 2, 2019
